

W.A. Horse Council News

April 2010

Patron: The Hon David K. Malcolm AC QC.
Chairperson: Diane Bennit Ph: 9291 0202 Fax: 9291 0206
email: bennit@optusnet.com.au
Vice Chairperson: Alan Parker email: dot.parker@bigpond.com
WAHC: 29 Ashurst Drive, Lesmurdie, WA 6076



WAHC
Major
Sponsors

BATES
SADDLES
www.batesaustralia.com.au

WINTEC
WORLD'S NO.1 SYNTHETIC SADDLE
www.wintec.net.au

srg
Jenny Manuel 1300 730 1788
Account Manager
T +61 8 9208 0703 M 0408 094 468 F +61 8 9201 1065
E jenny@srqcorp.com.au W www.srqcorp.com.au
general insurance | life insurance | risk management
www.srqcorp.com.au

THE AUSTRALIAN HORSE INDUSTRY COUNCIL (AHIC) has a policy that Equine Influenza (EI) vaccination should not be permitted in the absence of an incursion of the EI virus.

The recent meeting of AHIC's Industry Advisory Committee held on February 26th in NSW, unanimously endorsed the AHIC Board's policy.

Present at this meeting were representatives from:

**ARABIAN HORSE SOCIETY
AUSTRALIAN PONY STUD BOOK
AUSTRALIAN STOCK HORSE SOCIETY
EQUESTRIAN AUSTRALIA
HARNESS RACING AUSTRALIA
HORSE SA**

**NATIONAL CAMPDRAFT COUNCIL OF AUST
POLOCROSSE ASSOCIATION OF AUSTRALIA
INC**

**PONY CLUB AUSTRALIA
QUEENSLAND HORSE COUNCIL
RIDING PONY SOCIETY OF AUSTRALIA
VICTORIAN HORSE COUNCIL INC
WELSH PONY & COB SOCIETY INC
WA HORSE COUNCIL INC**

Closing Whitfords Beach To Horses

The Council presented a submission to the City Of Joondalup asking them to reconsider the decision to close the Whitfords Beach to horses, and attended and addressed two rallies, organised by the 'Whitfords Horse Beach' committee.

The closing date for the community consultation period for 'Save Whitfords horse beach' ended on the 6th April and over 4600 responses were received to the draft beach management plan.

The views expressed, issues raised and results of the consultation will guide elected City Of Joondalup members in making a decision at a future Council meeting.

However, because of the amount of work required to process such a large number of submissions, it is anticipated that the results of the survey will not be presented to Council until later in the year.

Right: The beach protest

25 March 2010 EQUINE INFLUENZA DECISION UNJUSTIFIED

Australia's peak veterinary body has urged the federal government to reverse its decision allowing voluntary vaccination against the equine influenza (EI) virus.

"We completely oppose this decision to allow vaccination when there's no outbreak," said President of the Australian Veterinary Association, Dr Mark Lawrie.

"There can be no justification for this decision on scientific, economic or practical grounds.

"All inquiries into vaccination against EI have indicated that it is an expensive option, which would have a negative impact on the way that the Australian horse industry operates.

"The government's approach won't prevent an outbreak and it won't save jobs. If there is an outbreak, vaccination will only delay detection.

"Vaccinated horses will still need to be subject to movement standstill because they can still spread the disease. In order to ensure long-term security for the industry there needs to be a proper emergency disease funding arrangement for the horse industry. This is important because the threat to the industry is bigger than EI – a funding agreement will deal with any horse diseases that might affect the industry," said Dr Lawrie.



Left:
Photo courtesy
Andy Evans,
Gormaymax
Photography

CITY OF SWAN PARKING POLICIES

The Council has been in touch with the City of Swan over a draft of a revised parking policy for commercial vehicles – that has been put out for a period of public consultation.

The proposal is to require planning permission if more than two light trucks or commercial vehicles are going to be parked on a property for more than two hours, even in rural districts.

Proposals for residential and other zones are even more restrictive.

The Council has established there are a number of equestrian events, competitions or gatherings, where there would be a number of trucks in the parking areas, and so far this has not been taken into account therefore this policy has far reaching implications for the horse industry.

The Council has prepared and delivered a submission to the City of Swan, which seeks an exemption for the need to have planning permission for each venue hosting an equestrian show or event.

The WA Horse Emergency Communication Database

The website is a free initiative setup by the WA Horse Council Inc to aid all those involved within the WA Horse industry to be kept up to date in the event of an emergency affecting horse owners in Western Australia. It will ensure that you can and will be contacted in the case of an outbreak of any exotic horse disease entering Australia.

What joining the data base provides for you:

- Direct notification of an outbreak of exotic disease,
- Direct notification of potential "standstills",
- Direct notification of biosecurity measures to be taken,
- Direct notification of border restrictions.

To sign up to for this free information and notification visit the WA Horse Emergency website and sign up.

www.wahorseemergency.com.au

Trails Talk

The Council wants to bring to your attention an excellent resource for trail users, groups and organizations. The website www.trailtalk.com.au is an excellent tool for anyone in the trails community as it provides an easy way to communicate with your members and promote your activities to the wider trails community.

Groups can be formal - e.g. Horse riding, bush walking and mountain bike clubs, or informal - e.g. a group of friends that paddle/walk regularly and wish to post photos and discuss where to meet next. A new guide has been created to show you step by step how to set up your own Group and how easy it is to use the site. To download the guide go to [www](http://www.trailtalk.com.au) (link to DSR website) or find it under 'Quick links' on the home page of <http://www.trailtalk.com.au>.

Over 200 individuals have joined Trailtalk with 29 discussions and over 40 events currently posted on the site. Hear from you on Trailtalk soon. The Council plans to set up a forum for the horse trail riding community to discuss trails rides, events, equipment and allow for discussion in the public domain.

Small Farms Expo

Lilac Park in Guildford resembled the Dowerin Field day on the 10th April and was a great venue for the Small Farms Expo, which highlighted the range of equipment and accessories available to small landowners, including horse property owners.

It was the ideal venue for those interested in sourcing information on products that would best suit their property and to have the opportunity to chat to distributors about fertilizers, tractors, solar gates, fencing requirements, additives for the soil, or speak to the producers of chaff, a range of kelp and seaweed products and shed manufacturers. The Small Landholders Information Service was also there and they had a range of information to suit all sized properties.

More information can be seen on their website www.agric.wa.gov.au/small_landholder. With over 3500 visiting the Small Farms Expo last year it shows the interest and desire from horse and other property owners to care for their land and enjoy the lifestyle offered by living on a rural property.

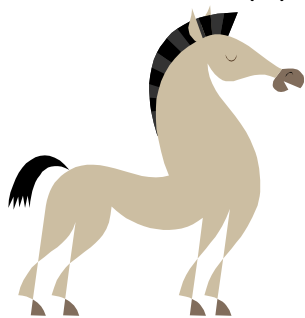
INNOVATIVE INSURANCE SOLUTIONS

By thinking differently, SRG Corporate can often deliver added value to your business. Their services include:

- Insurance Broking • Risk Management
- Life Insurance • Claims management

First they discover what is unique about your business. Then they recommend an individually tailored insurance and risk management plan to help both your peace of mind and your balance sheet.

Contact :
Jenny Manuel (Dip Fin Serv) Accounts Manager
T(08) 92080703 M 0408094468 F (08)92011066



Below: At the Small Farms Expo there were stalls offering everything a horse property owner could wish for.... from tractors to solar gates to wine tasting!



EQUESTRIAN RADIO SHOW

Listen in to 'TALKING HORSES' 91.3 SportFM Broadcast every Tuesday from 6 to 7pm, "TALKING HORSES" can also be downloaded, on www.sportfm.com.au, click on podcasts and then click equestrian.

To ensure that your event, club, sport, breed or business receives coverage, of if you are interested in taking 'sponsorship spots' which can include an interview contact - presenter Diane Bennit 92910202 or email bennit@optusnet.com.au

If you are unable to listen to the show on your radio go to www.sportfm.com.au then click 'listen live'

Remember you can download the show on www.sportfm.com.au then click podcast.

WAHC FREE Landcare Field Days

The very successful partnership between the WAHC, Perth Natural Resource Management (NRM) and Chris Ferreira from Landcare Solutions for presenting free sustainable land management workshops (Horse Land and Water) field days for members of the WA horse community will recommence in May. These free workshops/field days are undertaken on strategically selected soil types and property conditions found throughout the horse industry region would be represented - from small private holdings through to commercial 'flagship' horse enterprises - effectively covering the scope and needs of all those involved in the horse industry. The FREE field days cover weed control, perennial pasture establishment, rotational grazing, creating compost, break the worm cycle and good effective windbreaks, with previous field days attracting close to 400 people.

Plenty of handouts and samples are available free of charge and include detailed information on proven product and service providers, such as seed merchants, pasture establishment contractors, soil testing companies, soil improvement companies and holistic worm burden control.

These free workshops start in May and to register, ring the hotline 1300 369 833

WAHC MEMBERSHIP SUBSCRIPTION FORM

Organisation Membership
 Individual Membership

Organisations (per annum):
 1) Under 50 members - \$40 per annum
 2) 50 - 100 members - \$80 per annum
 3) 100 plus members - \$100 per annum

Individual: \$40
 (per annum)

Name:

Address:

Ph: Fax: P/Code

I would like to receive the Horse Council's email updates on equestrian happenings Email:

Signed Date

Please make cheques /money orders payable to the Western Australian Horse Council and post to: Western Australian Horse Council, 29 Ashurst Drive, Lesmurdie 6076

The Horse Council portfolios includes Membership and Funding, Equine Research and Environment, Marketing and Public Relations, Legislation and Policy. Please tick if you would like to be involved in a working group for one of these.

DONATION / SPONSORSHIP

ADVERTISING

Ads in WAHC newsletters \$60 per year

DONATIONS are accepted to help theHorse Council continue their work with the horse community. Donation enclosed \$.....



BIO-JOHN
Animal Health

Bio-John

- Vitamins & Minerals
- Feed
- Saddlery & Tack
- Rider equipment
- Stable & Hygiene
- Horse Health

13 Camden St, Belmont 6104 Ph: 9277 6122



STEWART'S
AT BROOKLEIGH

AWARD-WINNING DINING

Casual à la carte dining
Weddings, Functions
Group Bookings
Conference Facilities

www.brookleigh.com.au
T: (08) 9296 6966



EUROPA

Bring you the biggest brands...

Come and see us, for all your saddlery, riding & country clothing requirements.
sales@europasaddlery.com

ALBANY 9841 7883	BYFORD 9525 4004	MANDURAH 9583 3666
BERRY 02 4464 2324	GAWLER 08 7200 2544	MIDLAND 9274 6322
BUNBURY 9791 5700	GERALDTON 9965 5570	WANGARA 9303 9301
	MADDINGTON 9459 3344	

• Ariat • Skye Park Rugs • Kieffer • Passier • R M Williams • Drizabone
• Ascot Equestrian • Euro Sport • Jaguar • Champion bridle wear

Swan Valley Progress Association Inc.

"Swan Valley - Gidgegannup Ward"
A Community United

Membership Details: Phone: 9296 1369
Email: SVPA@inet.net.au

Community Issues lobbied towards successful outcomes



BROOKLEIGH

www.brookleigh.com.au
T: (08) 9296 0018

EQUESTRIAN @ BROOKLEIGH

World-class facilities for hire -
Clinics, club days, shows, events.
Bunkhouse accommodation
Conference facilities

STEWART'S @ BROOKLEIGH

Casual dining or take-away.



THE FARM SHOP
(W.A. 1999 PTY. LTD)

Stockists of: •Animal Health •Castrol Oils •Chemicals •Clothing and Boots •Fencing •Fertiliser •Machinery •Pet Foods •Seeds •Shearing Gear •Stockfeeds •Water Equipment •Woolpacks/Twine

Outlets in Midland, Moora, Northam and Quairading

WARREN BARON Ph: 9274 0455 Fax: 9274 0466
Mobile: 0407 982 964 32 Clayton St., Bellevue WA 6056



Rosman Agencies

Wholesale distributors for all saddlery and pet supplies

7 Longfellow Crt, Belmont WA 6104
PH: 9477 4435 email: info@rosmans.com.au



NEED A SHED?

AUSPEX STEEL
Quality Sheds & Buildings

Specialists in pre-engineered structural steel sheds and buildings


9827 1220
sales@auspexsteel.com.au www.auspexsteel.com.au



Kylie Martin 0417 439 719
kyannaarabians4@bigpond.com



Kyanna Equestrian Enterprises



Australian Horse Riding Centres

Horse riding is a recreational activity the whole family can enjoy. Ride at accredited Centres, with well trained horses and experienced, qualified instructors. N.C.A.S. Level 1 Instructor training scholarships available.
Information 08 92910202
LET'S GO RIDING!!!

Include your ad in the Western Australian Horse Council newsletter each issue and support the horse community. \$60 for four issues.

HORSES VOTE TOO!



WA Horse Council

hoofbeats magazine

riding, training and horse care articles plus an 8 page 'GREEN HORSE' section on property care and maintenance.

BEAT THE PRICE RISE
subscribe on line now www.hoofbeats.com.au
\$40 for 12 months Ph: 08 93970506